

ASTLEY PARK - DESTINATION PLAY SPACE



1. Swing Rope - Timberplay
Max height for top of post 5.8m



2. Roll Up - Proludic
Height 1.73m

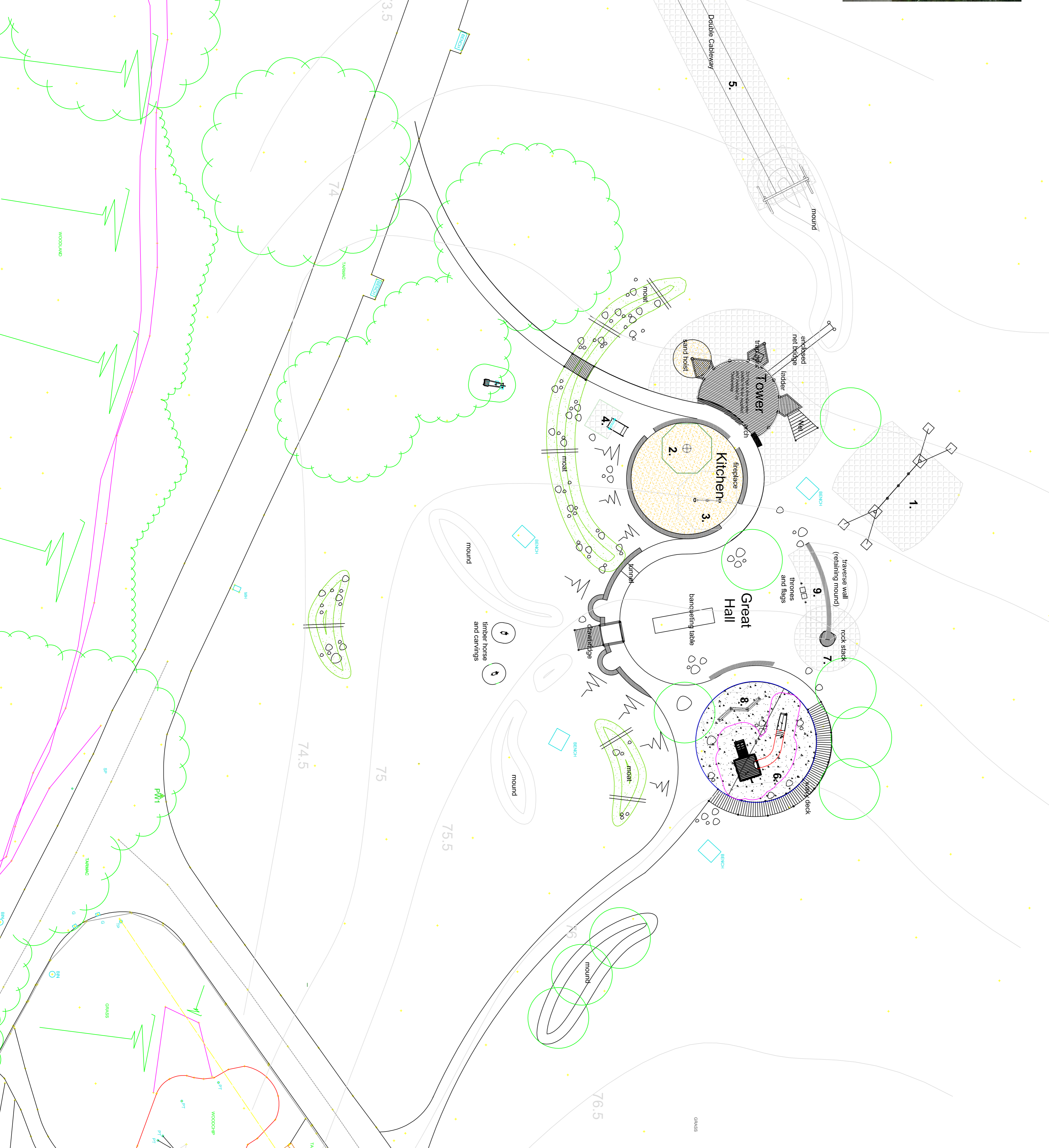


3. Hip Hop - Proludic
Height 1.57m



4. Small Children Slide - Timberplay

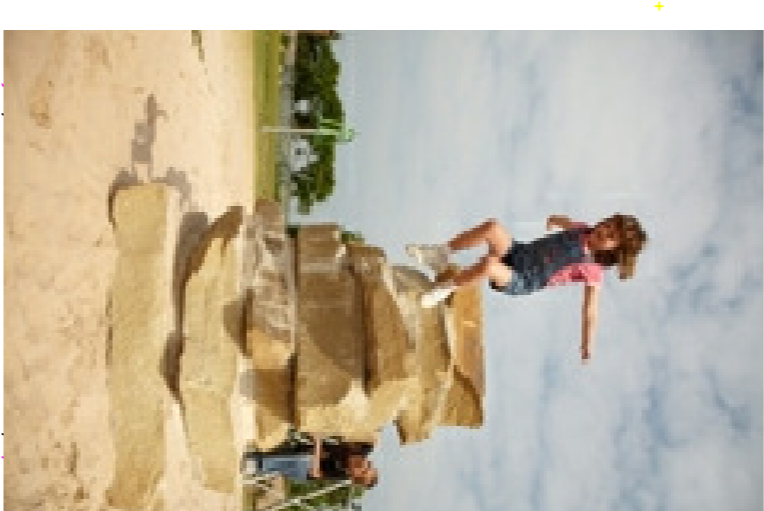
SCALE 1:200



5. Double Cableway - FHS (Proludic)
Height 3.2m



6. Jupiter 'Wall Tower Trier' - Bespoke. Platform height 2.95m



7. Rock Stack - Bespoke
3m height



8. Balance trail - Proludic
1.6m height



9. Traverse wall - Bespoke
Ground level to 2m high

KEY	
	Gravel safety surface
	Sand safety surface
	Grassmat safety surface
	Timber platform
	Castle walls
	Timber Deck (wavy)
	Balance log
	mound/contours
	swathe
	boulders
	Proposed trees

Revision Notes -

- CX1321/LO1 Rev 1 (07.05.14)
 - A. Due to underground services and excavation restrictions the sodrine has been re-located and moved back up the slide.
 - B. Solid 'gun tower' and stone steps replaced with a timber 'look out' tower. With link net bridge access to mound leading onto cableway.
- CX1321/LO1 Rev 2 (03.06.14)
 - A. Timberplay 'look out tower' removed. New mound to be included in place of the platform to sit from a link with net bridge.
 - B. Rockstack moved from mound sand area to merge with traverse wall (retaining).
 - C. Timberplay tree house and turned slide replaced with Jupiter tower and timber steps.
- CX1321/LO1 Rev 3 (31.7.14)
 - A. Jupiter tower removed and replaced with 3D vegetation.
 - B. Jupiter tower replaced with 3D vegetation.
 - C. Proposed trees have been added out on mound.

Dwg No: CX1321/LO1 Rev.3
 Date: 26.03.14
 Drawn by: DB
 Checked by: AD
SCALE: 1:200

